



CLIMBING SKINS

North America: Black Diamond Equipment, Ltd.  
2084 East 3900 South  
Salt Lake City, UT 84124

Europe: Black Diamond Equipment  
Hans-Maier-Strasse 9  
6020, Innsbruck, Austria

www.BlackDiamondEquipment.com



© Black Diamond Equipment, Ltd. 2024 M14496\_D

**⚠ WARNING [EN]**

**Skiing is inherently dangerous. Understand and accept the risks involved before participating. You are responsible for your own actions and decisions. Before using this product, read and understand all instructions and warnings that accompany it and familiarize yourself with its proper use, capabilities and limitations. We recommend that you get proper training in its use. Failure to read or follow any of these warnings can result in severe injury, paralysis or death!**

**🔧 INSTRUCTIONS FOR USE**

**PRE-TRIMMED SKI SKIN FITTING**

These skins are designed to fit a variety of skis within the listed length range. There is no need for trimming or length adjustment in the tip thanks to the pre-attached tip loop. You will have to adjust the tail clip to the optimal setting for your particular skis and trim any overhanging side material for optimum ski coverage and edge exposure.

1. Remove backing paper.
2. Secure the tip loop over the ski tip.
3. Starting at the ski tip, lay the skin down taut and centered, making sure the entire skin is centered on the ski.
4. Push the tail clip through the appropriate slot in the rubberized strap so that the skin holds taut to the tail of the ski.

**Trimming Sidecut Shape**

The offset skin trimmer allows you to trim the skin profile with an offset of 3 mm from each edge of the ski. It is no longer necessary to reposition the skin on the ski while trimming as it was in the past.

1. Center skin along entire length of ski. Plan to trim from tip to tail. Hold trimmer in right hand to trim right side of plush, and left hand to trim left side of plush.
2. Position trimmer against sidewall of ski with blade pointing towards the tail of the ski (rear knob on top of plush, leading fin inserted between plush and ski).
3. Applying consistent pressure against edge of ski, trace profile of ski with trimmer from tip to tail. Trimmer will perfectly cut sidewall with the correct offset.
4. Repeat steps for opposite side.

(See accompanying illustrations)

**SPLITBOARD SKIN FITTING**

**Cutting your skin to length:**

1. Remove backing paper.
2. Attach tail clips onto tail using the center positions.
3. Making sure the tailpiece is securely attached, position the skin so that the inside edge is aligned with the straight edge of the board. Adjust tail clips as necessary.
4. Hang your tip loop over your board tip.
5. Mark the skin where the tip loop sits on it.
6. Cut the skin length at an angle (the provided trim tool is adequate but scissors cut more precisely.)

**Attaching the tip loop:**

1. Place the metal bracket over the tip loop.
2. Slide the metal bracket over the cut end of the skin and mark its location.
3. Remove skin from the board and place the plastic backing plate on the plush side of the skin.
4. Using the included T10 Torx tool, screw one break-off screw through the bracket, skin and backing plate. Tip: Once the screw is started, care should be taken to not screw directly into your work surface. ATTENTION: Screws only need to be lightly snug—do not over torque (recommended torque value: 5 in lbf or 0.56 Nm).
5. Screw the remaining screws into the tip plate.
6. Flex the tips of the screws back and forth with a pair of pliers until they snap off flush with the plastic plate.

**Trimming Sidecut Shape**

1. Offset the skin 3 mm from the straight edge of the board.
2. Use the offset trimmer as described above to trim the sidecut side of the skin, using the edge of the board as a guide.
3. Trim desired taper from front corners of skins.

(See accompanying illustrations)

**🔧 CARE AND MAINTENANCE**

**CHEAT SHEETS**

Using Cheat Sheets can make separating your skins easier and can help preserve your skin glue during long-term storage. To use Cheat Sheets properly, always make sure you store your skins in a cool, dry place with Cheat Sheets in place. After long-term storage, remove the Cheat Sheet at room temperature and not below-freezing temperatures. Exposure to hot temperatures can soften the glue, causing it to deform into the mesh Cheat Sheet and damaging the glue surface.

1. Cut the Cheat Sheet in half so you have a sheet that is at least half the length of your climbing skin. There is now one sheet for each skin in the pair.
2. Apply the half-length Cheat Sheet to the front or back half of the skin and then fold the other end onto the opposite side of the Cheat Sheet.

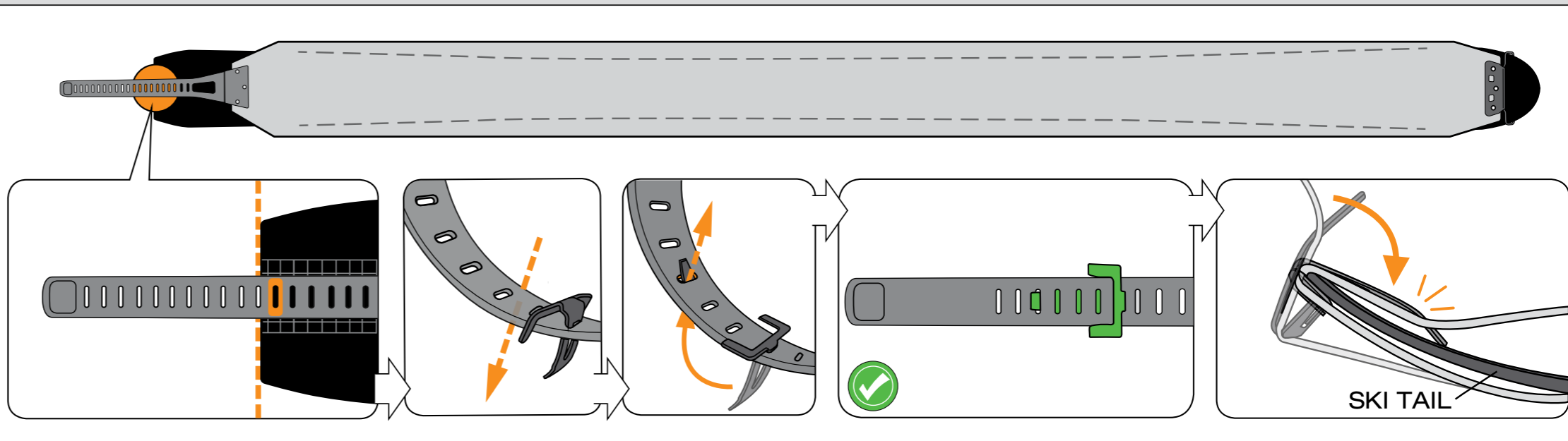
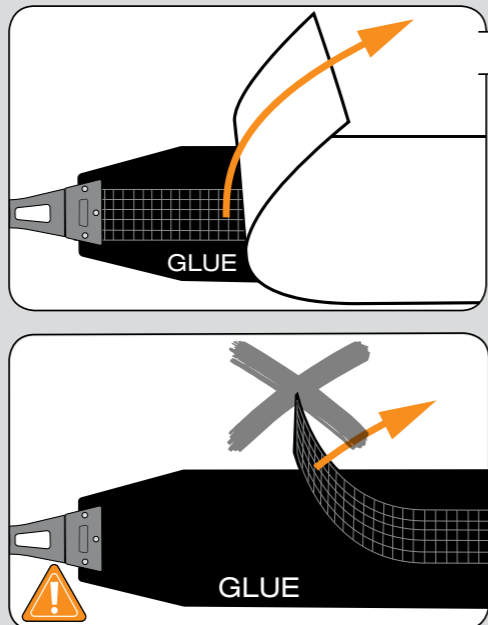
(See accompanying illustrations)

**🚗 STORAGE AND TRANSPORT**

At home, apply Cheat Sheets and store in a cool, dry place for long-term storage in order to preserve glue quality. Use the skin bag to keep skins clean. After long-term storage, remove Cheat Sheets at room temperature for best results.

- Do not expose your skins to extreme heat.
- Do not leave the glue side of your skins exposed to UV light for

**🖐️ FIXED LENGTH SKINS**



**🖐️ SPLITBOARD SKINS**

